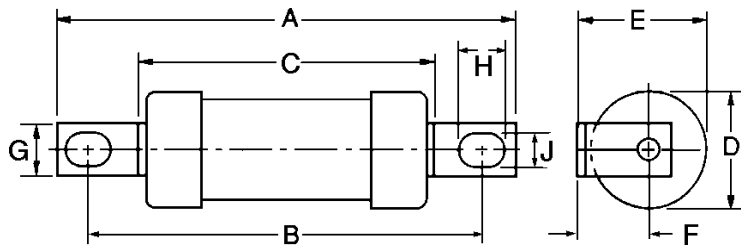



Offset Bolted Tags

BS88: Parts 1 & 2, IEC269, Parts 1 & 2

The use of 660V ac systems for large industrial plants has not evolved to any significant extent the majority of applications remaining at 415V. However, for applications above 415 and 550V ac Bussmann offer the 660V range of fuse links which meet the dimensional and performance requirements of BS88 and IEC269 Parts 1 and 2. The fuse links are available with offset and centre bolted tags.



Catalogue Suffix	Dimensions (mm)								
	A	B	C	D	E	F	G	H	J
H07-660	82.3	71.5	52.0	22.0	22.4	11.5	8.7	7.7	5.4
K07-660	86.0	71.5	54.2	25.8	26.9	14.0	12.7	10.5	5.5
L14-660	111.0	94.5	67.0	35.5	37.0	19.2	19.0	10.3	8.7
M14-660	112.0	94.0	66.0	38.0	38.0	19.0	19.0	10.0	8.5



Order Code: Rating + H07-660
 BS Reference: A2
 Ratings (A): 2, 4, 6, 10, 16, 20, 25, 32
 Rated Voltage (V): 660 ac, 250 dc
 Carton Quantity: 20
 Fuse Holder: CAMASTER CM32F

Order Code: Rating + K07-660
 BS Reference: A3
 Ratings (A): 40, 50, 63
 Rated Voltage (V): 660 ac, 250 dc
 Carton Quantity: 20
 Fuse Holder: CAMASTER CM63F and CM100F

Order Code: Rating + L14-660
 BS Reference: A4
 Ratings (A): 80, 100
 Rated Voltage (V): 660 ac, 400 dc
 Carton Quantity: 10

Order Code: Rating + M14-660
 Ratings (A): 125, 160, 200
 Rated Voltage (V): 660 ac, 400 dc
 Carton Quantity: 5

Full details of all our Fuse Holders can be found in our Circuit Components catalogue, available on request.

Centre Bolted Tags



Order Code: Rating + K08-660
 Ratings (A): 2, 4, 6, 10, 16, 20, 32, 40, 50, 63
 Rated Voltage (V): 660 ac, 250 dc
 Carton Quantity: 20

Order Code: Rating + K09-660
 Ratings (A): 2, 4, 6, 10, 16, 20, 32, 40, 50, 63
 Rated Voltage (V): 660 ac, 250 dc
 Carton Quantity: 20

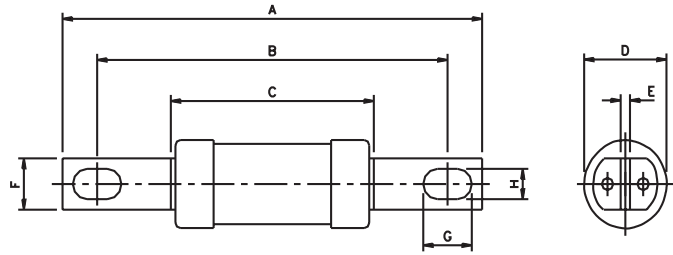
Order Code: Rating + L09-660
 BS Reference: B1
 Ratings (A): 80, 100
 Rated Voltage (V): 660 ac, 400 dc
 Carton Quantity: 10

Order Code: Rating + M09-660
 BS Reference: B2
 Ratings (A): 125, 160, 200
 Rated Voltage (V): 660 ac, 400 dc
 Carton Quantity: 5

Order Code: Rating + N09-660
 BS Reference: B3
 Ratings (A): 250, 315
 Rated Voltage (V): 660 ac, 400 dc
 Carton Quantity: 1

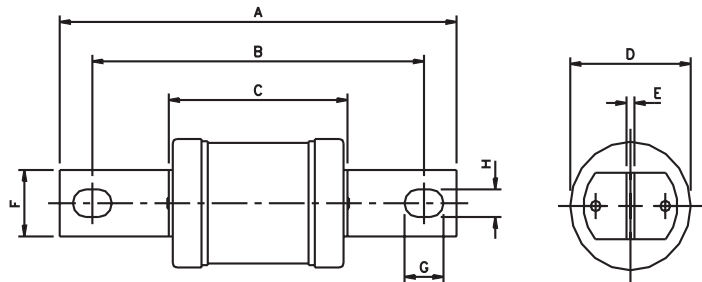
Order Code: Rating + P09-660
 BS Reference: B4
 Ratings (A): 355, 400
 Rated Voltage (V): 660 ac, 400 dc
 Carton Quantity: 1

Order Code: Rating + N11-660
 Ratings (A): 125, 160, 200, 250, 315
 Rated Voltage (V): 660 ac, 400 dc
 Carton Quantity: 1



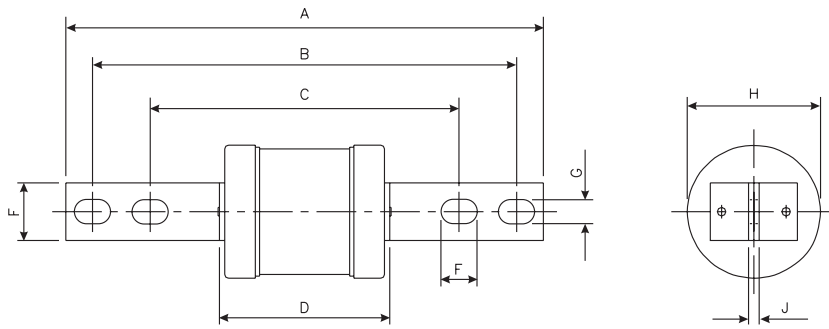
Catalogue Number	Dimensions (mm)							
	A	B	C	D	E	F	G	H
2-32A K08-660	111.0	92.5	53.7	22.0	2.4	12.7	13.0	7.5
40-63A K08-660	111.5	93.0	54.2	25.0				

Catalogue Number	Dimensions (mm)							
	A	B	C	D	E	F	G	H
2-32A K09-660	127.0	106	53.7	22.0	2.4	14.0	15.2	8.7
40-63A K09-660	128.0	106.5	54.2	25.0				



Catalogue Suffix	Dimensions (mm)							
	A	B	C	D	E	F	G	H
L09-660	136.0	110.5	65.5	35.5	3.2	19.0	15.1	8.7
M09-660	135.0	110.0	65.0	37.0	3.2	19.0	15.0	8.7
N09-660	135.0	113.0	73.0	49.0	3.2	25.4	12.7	9.5
N11-660	162.0	135.0	73.0	49.0	3.2	25.4	15.8	10.5
P09-660	135.5	113.5	75.0	58.5	4.7	25.4	12.7	9.5

Centre Bolted Tags - 4 holes



Catalogue Suffix	Dimensions (mm)								
	A	B	C	D	E	F	G	H	J
P11-660	212.0	187.0	136.0	75.0	25.4	16.0	10.0	59.0	5.0
P12-660	262.0	231.0	167.0						

Catalogue Suffix	Dimensions (mm)								
	A	B	C	D	E	F	G	H	J
R11-660	210.0	186.0	135.0	76.0	26.0	16.0	10.0	74.0	6.5
R12-660	262.0	231.0	167.0						



Order Code: Rating + P11-660
 BS Reference: C1
 Ratings (A): 355, 400
 Rated Voltage (V): 660 ac, 400 dc
 Carton Quantity: 1

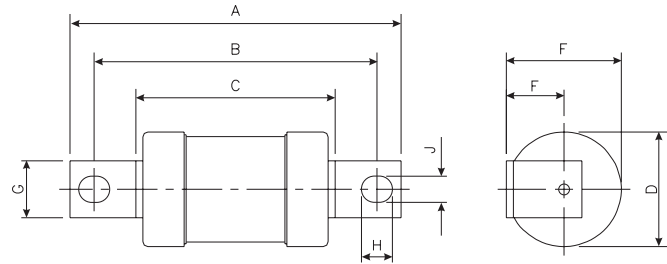
Order Code: Rating + P12-660
 Ratings (A): 355, 400
 Rated Voltage (V): 660 ac, 400 dc
 Carton Quantity: 1

Order Code: Rating + R11-660
 BS Reference: C2
 Ratings (A): 450, 500, 560, 630
 Rated Voltage (V): 660 ac, 400 dc
 Carton Quantity: 1

Order Code: Rating + R12-660
 Ratings (A): 450, 500, 560, 630
 Rated Voltage (V): 660 ac, 400 dc
 Carton Quantity: 1

Offset Bolted Tag

BS88 do not allocate a reference number to these fuse links.
Rated breaking capacity 80kA ac 40kA dc



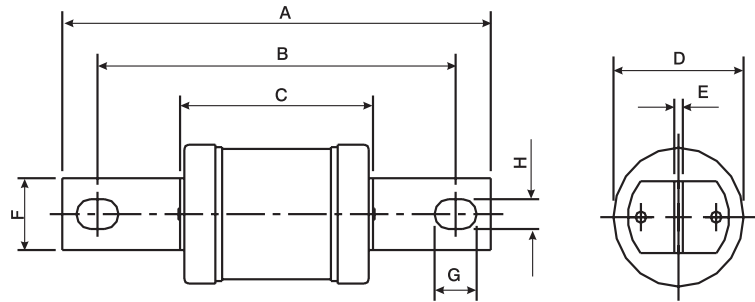
Order Code: Rating + M13
Ratings (A): 125, 160, 200
Rated Voltage (V): 660 ac, 400 dc
Carton Quantity: 5

Catalogue Suffix	Dimensions (mm)								
	A	B	C	D	E	F	G	H	J
M13	120.0	99.0	70.0	38.0	27.0	8.0	26.0	12.0	8.7
M23	262.0	231.0	167.0		38.5	19.0		14.0	
N15	120.0	100.0	79.0	49.0	41.0	16.5		15.0	

Order Code: Rating + M23
Ratings (A): 125, 160, 200
Rated Voltage (V): 660 ac, 400 dc
Carton Quantity: 1

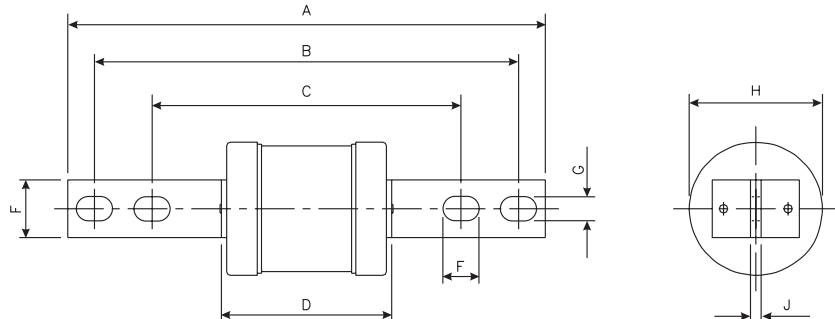
Order Code: Rating + N15
Ratings (A): 250, 315
Rated Voltage (V): 660 ac, 400 dc
Carton Quantity: 1

Centre Bolted Tag



Order Code: Rating + N34
Ratings (A): 250, 315
Rated Voltage (V): 660 ac, 400 dc
Carton Quantity: 1

Catalogue Suffix	Dimensions (mm)							
	A	B	C	D	E	F	G	H
N34	135.0	113.0	74.5	66.5	5.0	25.4	12.5	9.5



Order Code: Rating + P35
Ratings (A): 355, 400
Rated Voltage (V): 660 ac, 400 dc
Carton Quantity: 1

Order Code: Rating + R40
Ratings (A): 450, 500
Rated Voltage (V): 660 ac, 400 dc
Carton Quantity: 1

Catalogue Suffix	Dimensions (mm)								
	A	B	C	D	E	F	G	H	J
P35	210.0	187.0	136.0	75.0	19.0	16.0	10.0	59.0	5.0
R40		185.0	135.0	81.0				74.0	9.5