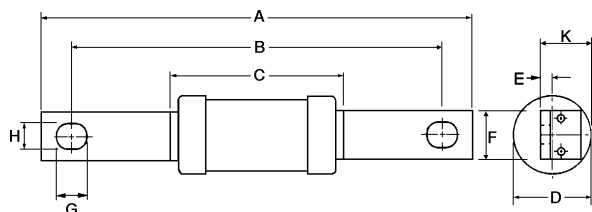


Centre Bolted Tag

BS88: Parts 1 & 2, 1988, IEC269-1 & 2 1986

CSA C22.2 No. 106-M1985 where applicable.

This range of Q1 fusing factor general purpose (gG) fuse links has a breaking capacity of 80kA ac and 40kA dc where applicable.



Catalogue Prefix	Dimensions (mm)								
	A	B	C	D	E	F	G	H	K
AC	113.5	97.5	55.5	21.0	1.6	12.7	13.5	7.0	11.2

Catalogue Prefix	Dimensions (mm)								
	A	B	C	D	E	F	G	H	K
AD	128.5	111.5	55.0	21.0	1.4	14.2	11.8	8.7	11.2

Catalogue Prefix	Dimensions (mm)								
	A	B	C	D	E	F	G	H	K
BC	113.5	97.5	55.5	21.0	1.6	7.0	13.5	12.7	11.2
BC63M									

Catalogue Prefix	Dimensions (mm)								
	A	B	C	D	E	F	G	H	K
BD	128.5	111	55.0	21.0	1.4	14.2	11.8	8.7	11.2

Catalogue Prefix	Dimensions (mm)								
	A	B	C	D	E	F	G	H	K
CD	126	111	58.5	21.0	3.2	14.3	11.1	8.7	19.5
CD100M125 & CD100M160				26.0					22.0
CD100M200				47.0					31.0



Order Code: AC + Rating
 Ratings (A): 2, 4, 6, 10, 16, 20, 25, 32
 Rated Voltage (V): 550 ac, 250 dc
 Carton Quantity: 20

Order Code: AD + Rating
 Ratings (A): 2, 4, 6, 10, 16, 20, 25, 32
 Rated Voltage (V): 550 ac, 250 dc
 Carton Quantity: 20

Order Code: BC + Rating
 Ratings (A): 40, 50, 63
 Motor Ratings (A): 63M80, 63M100
 Rated Voltage (V): 550 ac, 250 dc;
 No dc rating for Motor Rated
 Carton Quantity: 20

Order Code: BD + Rating
 Ratings (A): 40, 50, 63
 Rated Voltage (V): 550 ac, 250 dc
 Carton Quantity: 20

Order Code: CD + Rating
 BS Reference: B1
 Ratings (A): 80, 100
 Motor Ratings (A): 100M125, 100M160, 100M200
 Rated Voltage (V): 550 ac
 415 ac on Motor Rated
 Carton Quantity: 10

Centre Bolted Tag (cont.)

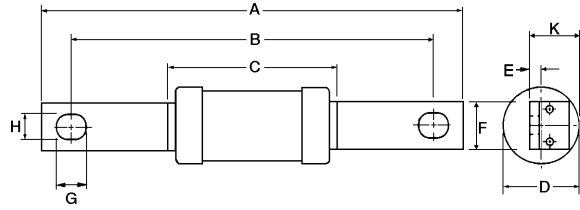


Order Code: DD + Rating
 BS Reference: B2
 Ratings (A): 125, 160, 200
 Motor Ratings (A): 200M250, 200M315
 Rated Voltage (V): 415 ac
 Carton Quantity: 5

Order Code: ED + Rating
 BS Reference: B3/B4
 Ratings (A): 250, 315, 355, 400
 Motor Ratings (A): 315M400, 400M500
 Rated Voltage (V): 415 ac, 550 ac for 400M500
 Carton Quantity: 1

Order Code: EFS + Rating
 Ratings (A): 125, 160, 200, 250, 315*
 Rated Voltage (V): 415 ac
 Carton Quantity: 1

* The 315A fuse has a 4 hole fixing, please refer to dimensional drawing below.



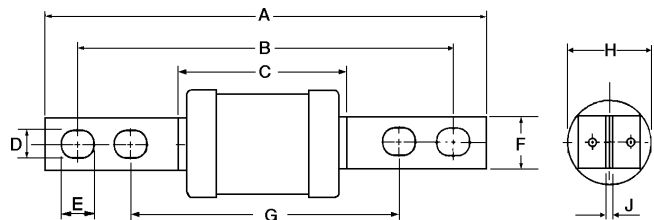
Catalogue Prefix	Dimensions (mm)								
	A	B	C	D	E	F	G	H	K
DD	136	110	47.0	31.0	3.2	19.0	12.5	9.0	22.5
DD200M									

Catalogue Numbers	Dimensions (mm)								
	A	B	C	D	E	F	G	H	K
ED250	136	111	47.0	31.0	4.7	19.0	12.5	9.0	22.5
ED315			50.0	38.0		25.4			31.0
ED315M400									
ED355 & 400									
ED400M500									

Catalogue Prefix	Dimensions (mm)								
	A	B	C	D	E	F	G	H	K
EFS	158	133	47.0	31.0	3.2	19.0	12.5	10.5	22.5

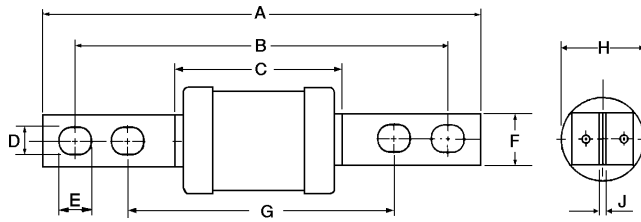


Order Code: EF + Rating
 BS Reference: C1
 Ratings (A): 355, 400
 Motor Ratings (A): 400M500
 Rated Voltage (V): 415 ac, 550 ac for 400M500
 Carton Quantity: 1



Catalogue Numbers	Dimensions (mm)								
	A	B	C	D	E	F	G	H	J
EFS315	209	184	50.0	10.5	12.5	25.4	133	38.0	4.7
EF355 & 400					15.5				
EF400M500					210				

Centre Bolted Tag (cont.)

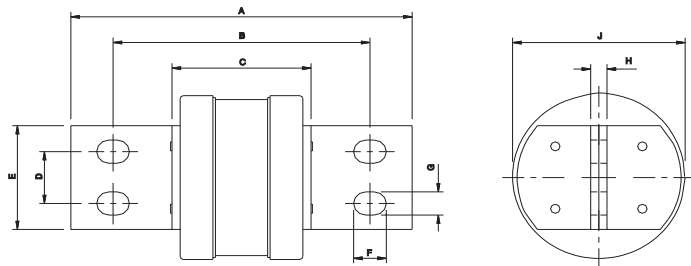


Catalogue Prefix	Dimensions (mm)								
	A	B	C	D	E	F	G	H	J
FF	210	185	77.5	10.5	15.5	25.4	134	74.0	6.4

Catalogue Prefix	Dimensions (mm)								
	A	B	C	D	E	F	G	H	J
FG	262	231	77.5	10.5	15.5	38.0	167	74.0	6.4

Catalogue Prefix	Dimensions (mm)								
	A	B	C	D	E	F	G	H	J
GF	210	185	80.5	10.5	15.5	25.4	134.5	83.0	9.5

Catalogue Numbers	Dimensions (mm)								
	A	B	C	D	E	F	G	H	J
GG710 & 800	262	231	77.5	10.5	15.5	38.0	165	83.0	6.4
GG1000 & 1250		228.5	84.0					100	12.7



Catalogue Numbers	Dimensions (mm)								
	A	B	C	D	E	F	G	H	J
GH710 & 800	198	149	81.0	32.0	63.5	19.0	14.0	9.5	83.0
GH1000 & 1250								100	



Order Code: FF + Rating
 BS Reference: C2
 Ratings (A): 450, 500, 560, 630
 Rated Voltage (V): 550 ac, 400 dc
 Carton Quantity: 1

Order Code: FG + Rating
 Ratings (A): 450, 500, 560, 630
 Rated Voltage (V): 550 ac, 400 dc
 Carton Quantity: 1

Order Code: GF + Rating
 BS Reference: C3
 Ratings (A): 710, 800
 Rated Voltage (V): 550 ac, 250 dc
 Carton Quantity: 1

Order Code: GG + Rating
 Ratings (A): 710, 800, 1000, 1250
 Rated Voltage (V): 550 ac, 250 dc*
 * 1000 & 1250A have no dc rating.
 Carton Quantity: 1



Order Code : GH + Rating
 BS Reference: D1
 Ratings (A): 710, 800, 1000, 1250
 Rated Voltage (V): 550 ac
 Carton Quantity: 1