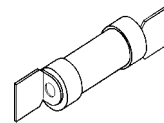


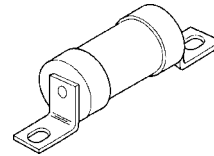


The Bussmann range of High Breaking Capacity fuse links for low voltage industrial and general applications, meet the requirements of BS88 and IEC269. Compact designs are available in current ratings up to 400 Amps, offering the end-user the advantage in space saving, whilst maintaining the thermal and electrical performance. The compact range, fully comply with the dimensional and performance requirements of the Standard. The full range of low voltage fuse links for industrial and general applications are available in ratings from 2 to 1250 Amps, in a variety of tag forms, the following illustrating some of the more popular:

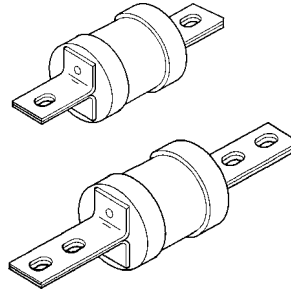
Offset Blade



Offset Bolted



Centre Bolted 2 or 4 hole fixing



Supplementary ranges cover applications up to 660 Volt ac and 500 Volt dc including those with non-standard tag fixings.

Standards

BS88: Part 1 (IEC269-1)	General requirements
BS88: Section 2.1 & 2.2 (IEC269-3)	Additional requirements for industrial fuse links (bolted type).
IEC269-3	Additional requirements for household fuse links (domestic).
BS88: Part 4 (IEC269-4)	Additional requirements for semiconductor protection fuse links.
BS88: Part 5	Additional requirements for electricity supply network (feeder pillar) fuse links.
BS88: Part 6	Additional requirements for compact fuse links (blade tag).

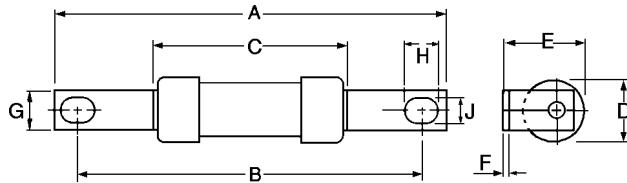
All dimensions in this catalogue are quoted in millimetres (mm)

Offset Bolted Tag

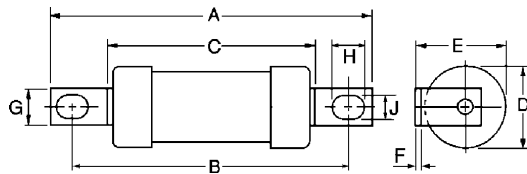
BS88: Parts 1 & 2, 1988, IEC269-1 1986

CSA C22.2 No. 106-M1985 where applicable.

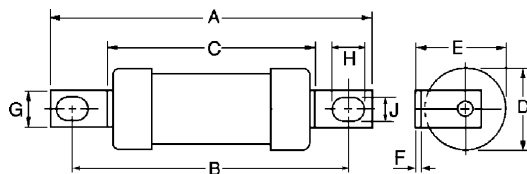
This range of Q1 fusing factor general purpose (gG) fuse links has a breaking capacity of 80kA ac and 40kA dc where applicable.



Catalogue Prefix	Dimensions (mm)								
	A	B	C	D	E	F	G	H	J
AAO	85	73.5	35.5	13.7	14	1.2	8.7	8.0	5.5
AAO32M			54.5	21	22.3				



Catalogue Prefix	Dimensions (mm)								
	A	B	C	D	E	F	G	H	J
BAO	87	73.5	54.5	21	22.5	1.2	12.7	8.0	5.5
BAO63M									



Catalogue Prefix	Dimensions (mm)								
	A	B	C	D	E	F	G	H	J
CEO	110	94.0	58.5	21.0	24.5	3.2	14.3	11.0	8.7
CEO100M125 & 160				25.8	26.8				
CEO100M200			47.0	31.0	29.5		19.0	10.0	9.0



Order Code: AAO + Rating

BS Reference: A2

Ratings (A): 2, 4, 6, 10, 16, 20, 25, 32

Motor Ratings (A): 32M40, 32M50, 32M63

Rated Voltage (V): 550 ac

Carton Quantity: 20

Fuse Holder: CAMASTER CM32F



Order Code: BAO + Rating

BS Reference: A3

Ratings (A): 40, 50, 63

Motor Ratings (A): 63M80, 63M100

Rated Voltage (V): 550 ac

Carton Quantity: 20

Fuse Holder: CAMASTER CM63F



Order Code: CEO + Rating

BS Reference: A4

Ratings (A): 32, 40, 50, 63, 80, 100

Motor Ratings (A): 100M125, 100M160, 100M200

Rated Voltage (V): 550 ac, 415 ac for Motor Fuse Links

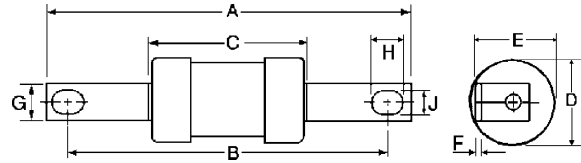
Carton Quantity: 10

Full details of all our Fuse Holders can be found in our Circuit Components Catalogue available on request.

Offset Bolted Tag continued



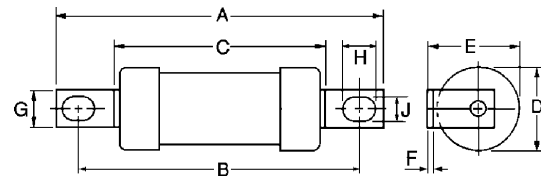
Order Code: DEO + Rating
 Ratings (A): 125, 160, 200
 Motor Ratings (A): 200M250, 200M315
 Rated Voltage (V): 415 ac
 Carton Quantity: 5



Catalogue Prefix	Dimensions (mm)								
	A	B	C	D	E	F	G	H	J
DEO	110	94.0	47.0	31.0	29.5	3.2	19.0	10.0	9.0
DEO200M									



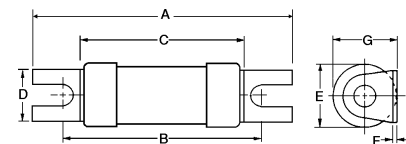
Order Code: OSD + Rating
 Ratings (A): 80, 100
 Motor Ratings (A): 100M125, 100M160
 Rated Voltage (V): 550 ac
 415 ac for Motor
 Carton Quantity: 20
 Fuse Holder: CAMASTER CM100F



Catalogue Prefix	Dimensions (mm)								
	A	B	C	D	E	F	G	H	J
OSD	95.0	73.0	54.5	21.0	22.5	1.2	12.7	8.0	5.5
OSD100M				26.0	25.7				



Order Code: NITD + Rating
 BS Reference: A1
 Ratings (A): 2, 4, 6, 10, 16, 20, 25, 32
 Motor Ratings (A): 20M25, 20M32, 32M40, 32M50, 32M63
 Rated Voltage (V): 550 ac; 415 ac for Motor Rated 32M40-63
 Carton Quantity: 20
 Fuse Holder: CAMASTER CM32FC

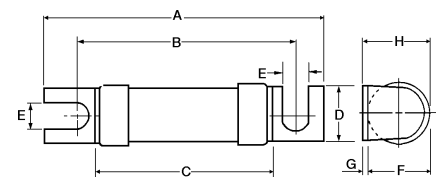


Catalogue Prefix	Dimensions (mm)						
	A	B	C	D	E	F	G
NITD	55.0	44.5	34.6	11.2	13.8	0.8	14.0
NITD32M			35.6		17.5	1.2	18.5

In most motor circuit applications gG fuse links are used. Extended dual ratings of motor circuit protection with gM characteristics are available offering savings in the size and cost of Fusegear equipment.

Order Code: STD + Rating
 Ratings (A): 2, 4, 6, 10, 16, 20, 25, 32
 Rated Voltage (V): 240 ac
 Breaking Capacity: 33kA ac
 Carton Quantity: 20

Full details of all our Fuse Holders can be found in our Circuit Components Catalogue available on request.



Catalogue Prefix	Dimensions (mm)							
	A	B	C	D	E	F	G	H
STD	47.0	35.0	24.0	11.0	4.7	12.0	0.8	13.0